

Views & Vision

The Newsletter of the Evangelical Lutheran Education Association



Happy 50th Birthday to Long Island Lutheran School!

**Maureen Bonavita, Director of Communications
Long Island Lutheran Middle & High School
Brookville, New York**

Volume 11, Issue 3

Spring 2010

In 1955 a group of Lutheran pastors, teachers, laymen and women began to discuss the need for secondary Christian education on Long Island. Building on a locally strong elementary Christian school base, a group of seventeen Lutheran churches launched their dream to build a Lutheran junior-senior high school on Long Island and formed an Association to help realize this dream.

After much searching, the Association located the 32-acre Rutherford Estate in Brookville on the "Gold Coast" of Long Island. The estate, originally called High Pool, had been built in the 1930's and consisted of a 30-room mansion, a six car Carriage House with an apartment overhead, a seven room Caretaker's Residence, tennis courts, and an Olympic-sized swimming pool. The estate was purchased for \$110,000 in 1959 and as advance enrollment quickly reached 400, the decision was made to build the permanent school building. The Rev. Rudy Ressmeyer, one of the original founders and pastor of Our Redeemer in Seaford at the school's inception, remembers "We had high hopes in the late fifties when we started planning for a junior-senior high school. After 50 years we can surely say that God not only heard our prayers but has blessed LuHi far beyond our wildest dreams!"

Long Island Lutheran officially opened its doors in September 1960 with an enrollment of 410 students in grades 7 through 9. Executive Director and Principal Rev. Elmer Eggold was joined by 19 Lutheran educators who guided the first LuHi students. Many of the faculty were relocated Midwesterners who lived dormitory-style in the mansion. Through the years, apartments were constructed in the mansion which still house faculty

today.

In 1962, Rev. Ed Visscher and Gerry Brunworth conceived an idea to financially assist the school – LuHi's Summer Programs for Education and Recreation. Since then, countless children from across Nassau, Suffolk, and Queens counties have spent a portion of their summer on our campus, learning skills in a host of recreational, athletic, and educational areas. To this day, the income from Summer Programs provides necessary funding for the school annually, essentially giving each student a \$2000 scholarship each year.

"Excellence in Education" was highlighted in 1989 when Long Island Lutheran Junior/Senior High School was named an "Exemplary Secondary School" by the U.S. Department of Education. Executive Director Dr. David Hahn and Principal Paul Wenger were invited to the White House for the presentation of this Presidential Award. Long Island Lutheran Middle &

High School is accredited by the Middle States Association of Colleges and Schools and is a member of the New York State Association of Independent Schools. With emphasis on college preparedness, curriculum offerings include honors and Advanced Placement courses in most disciplines, with college courses available to students beginning in the junior year. Each year graduates go on to some of the most prestigious colleges and universities across the US.

Since its inception, LuHi has continually strived to update facilities and over the years additions to the LuHi campus have included the Chapel/Performing Arts Center, a Student Center/ Dining Hall, Prayer



Opening Prayer Service in 1960

Story continued on Page 2

A Visit to the Well, continued from Page 1

Chapel, foreign language classrooms and laboratory, student ministry center and wrestling room, as well as our newest addition, the Ammerman Center which includes a second gymnasium, dance studio and music rehearsal studios.

Today, over 600 students represent the reality of these founders' dreams as we celebrate fifty years of academic excellence and daily strive to complete our mission of developing compassionate and educated leaders for the future. On January 30th, a worship service filled with "Joy and Thanksgiving" was held in celebration of the school's anniversary. This was followed by a Gala Dinner/Dance later in the evening celebrating the founders. Head of School David Hahn shares that, "In true LuHi fashion we are going to celebrate our 50th anniversary all year long. We thank God for the wisdom of our founders 50 years ago and look forward to the next 50 years!"

Other events planned to celebrate our 50th anniversary include a LuHi Family Habitat for Humanity Build, a cruise to Bermuda with LuHi family and friends, a Summer LuHi Family Fun Day on Campus, an All-School Reunion in October 2010, and an old fashioned LuHi Christmas Celebration in December. The LuHi Family steps into the next 50 years rooted in faith, thankful for the generations who contributed to our rich history... and growing in excellence as we look forward to carrying on this important legacy.



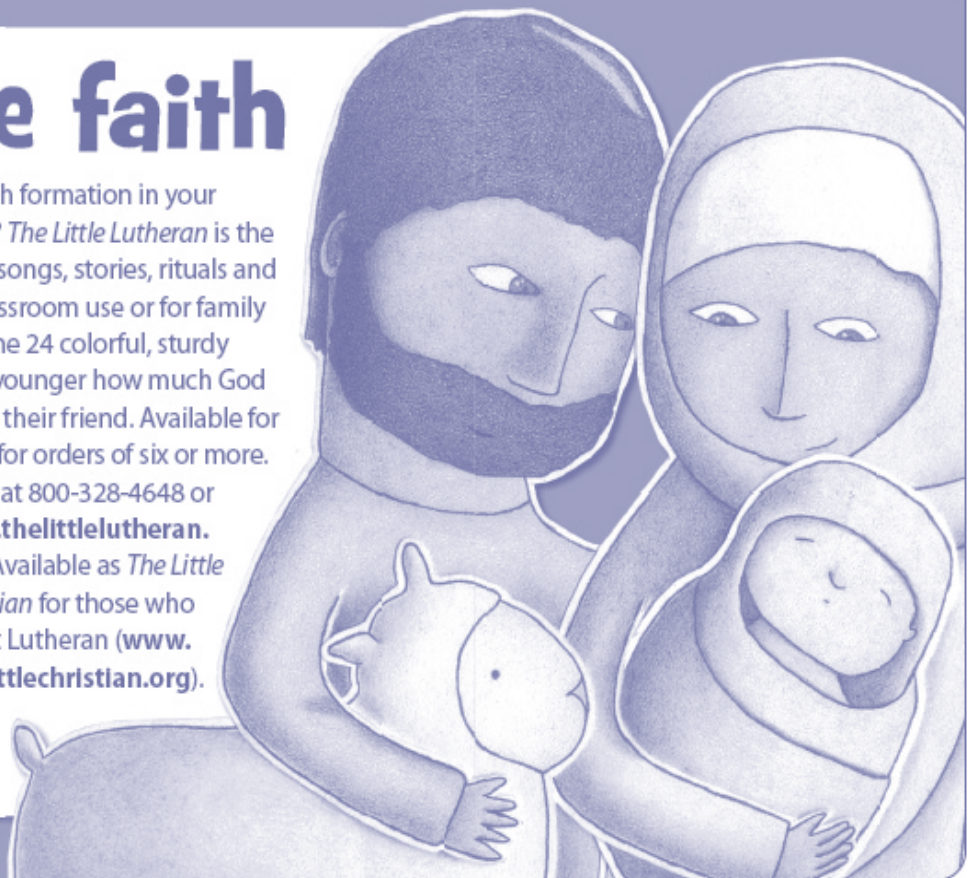
Worship Service at 50th Birthday Celebration

Maureen Bonavita, LuHi's Director of Communications, can be reached at Maureen.bonavita@luhi.org.
Visit Long Island Lutheran School's web site at www.luhi.org.

Nurture faith

Looking for help with faith formation in your school or congregation? *The Little Lutheran* is the answer. Each issue includes songs, stories, rituals and activities appropriate for classroom use or for family faith discussions at home. The 24 colorful, sturdy pages show children 6 and younger how much God loves them and that Jesus is their friend. Available for the bulk rate of only \$12.95 for orders of six or more.

Order at 800-328-4648 or www.thelittlelutheran.org. Available as *The Little Christian* for those who aren't Lutheran (www.thelittlechristian.org).



ELEA Needs Accreditation Team Members!

ELEA offers a full accreditation process for both early childhood centers and elementary schools as one of its important services. Those schools or early childhood centers who seek to enhance their ministry to children utilize this continuous improvement program to evaluate their present program, identify needs for improvement and create a seven-year plan to carry out these improvements. A key component of this process is the on-site team visit which affirms the findings of the self study and assists the school or center to focus on the development of their improvement plan. Each school or center is assigned a highly qualified team chair who organizes and directs the team visit. As this program continues to grow, additional

team chairs are needed. If you are a teacher or administrator dedicated to assist others to grow in the profession of Christian education, please contact the national office of ELEA to include your name as a prospective team chair.

For additional information you can contact the Accreditation Director, Hugh Kress via email hwkress@gmail.com.



Congratulations to Jean Bashi!



Jean Bashi, Administrator for Cross & Crown Lutheran School, Rohnert Park, California, a long-time ELEA member, has been selected by the Van Lunen

Center for Executive Management in Christian Schools at Calvin College for a 2010-2011 fellowship.

The Van Lunen Center for Executive Management in Christian Schools at Calvin College has announced its list of Fellows which includes educators from as far away as British Columbia as well as sixteen schools from across the United States. To view photos and see a list of all 2010-2011 Fellows, visit <http://www.calvin.edu/vanlunen/2010-fellows.html>.

The Fellows program is designed for Christian school heads with fewer than 10 years experience in their position. The majority of participant

expenses are covered by Van Lunen, including cost of instruction, travel, lodging, meals, coaching and access to topic experts.

The Van Lunen Center was established at Calvin in January 2007 and now operates with a \$2.4 million endowment gift to the college from the Richard D. Van Lunen Foundation. Its purpose is to provide world-class executive management education for senior leaders of schools based on the historic Christian faith (of which there are some 20,000 across the North American continent).

The Fellows program is a key part of that vision for Christian education. It is a selective one-year fellowship that, said Van Lunen Center director Shirley Roels, assists heads of Christian schools in refining the executive skills necessary for school management in the current competitive climate.

“Through case studies, reading, writing, interactive exercises, small group discussions, a school based project, and coaching,” she said, “participants will deepen their own

leadership, develop skills essential to the tasks of headship, and create deep relationships with peers and leaders. They will become more deeply prepared to craft and implement a Christian educational mission with parents, teachers and other supporting communities.”

The program begins with five residential days in July 2010, continues again in January for four days, and ends with three days in July 2011. Between sessions, faculty coaching and consultant support is available via phone, through on-line tools, and in person to assist fellows with a crucial school project.

The Van Lunen Center was established to serve faith-based schools large and small across the U. S. and Canada with a big-tent philosophy, reaching out to schools from a wide range of faith traditions, including Anabaptist, Catholic, evangelical Protestant, Episcopal, independent Christian, Lutheran and Reformed Christian day schools.

Enjoy the year, Jean!!

Making a significant gift to ministry can increase your bottom line! By making a gift for a charitable gift annuity, for instance to ELEA, you receive an income tax deduction and annuity payment for life. Plus, part of each payment is tax free. Call your ELCA Foundation Regional Gift Planner or the ELCA Foundation at 800-638-3522, ext. 2970.

Important Information About a New Tool for Parents



In a media culture awash in violence and pornography, parents often feel powerless to protect their kids from harmful images on TV and the Internet. Not only are certain programs inappropriate for family audiences, but commercials are often offensive and even blatantly distasteful. Until now parents have had no real options to protect their children.

Ken Ferguson (former Chief Operating Officer for National Geographic Television) has partnered with Steve McEveety (producer of *The Passion of Christ*) to found *MPOWER MEDIA*, which created a tool that puts parents in charge of their TV and Internet content - according to their own standards, not someone else's.

MPOWER offers a technology which allows parents to easily and automatically control what the kids see or watch

on TV, including skipping specific offensive words or scenes (not just programs), based on the family's own criteria. The tool also blocks offensive Internet content on every computer in the home (even a friend's computer that comes into the house).

To learn more about *MPOWER MEDIA* and to watch a short video showing the different *MPOWER* can make on TV viewing, visit www.mypowerbox.com. The web site also includes a sign up to receive a month e-newsletter, a free e-book written by best-selling author and Washington Times columnist Rebecca Hagelin, and to be the first to find out when *MPOWER* Box is available.

Amber S. Roseboom, Director of Affiliate Relations, *MPOWER MEDIA LLC*, can be reached at Amber.Roseboom@mpowermedia.net or 703/860-6797 x 126.

Health Curriculum for All Ages

The Children's Health Market is pleased to introduce THE GREAT BODY SHOP to the Evangelical Lutheran Education Association. Recently adopted by Grace Lutheran School in River Forest, IL for grades K-8, this premier health education curriculum has been in schools across the United States since 1987 and meets all the standards for the ELEA accreditation.

THE GREAT BODY SHOP is a pre K-middle school health education program that is research-based and is aligned to the National Health Education Standards. It provides current, quality health education materials that support your school's goals for socially, emotionally and physically healthy children and

families. It is easy to teach, fun for kids and has a very strong parent component. While increasing health knowledge, the program helps to build favorable health attitudes and establish health-enhancing behaviors among students, family and faculty.

Using a thematic approach, health topics are integrated into ten monthly units. Lessons are taught just once a week using an attractive magazine format called the Student Issue. Students learn how to make healthy food choices, stay physically active, respect themselves and others, and to take personal responsibility for making health decisions that can help



prevent obesity and diabetes, build positive character traits, and take part in violence/bully and drug prevention.

The curriculum is annually reviewed and updated, ensuring that it is always current and relevant. Program materials include a Teacher's Guide, Student Issues and Parent Bulletins, which are used as family resources. Music CDs in preschool and kindergarten reinforce health concepts through music.

For more information about THE GREAT BODY SHOP, visit their web site (www.TheGreatBodyShop.net) or give them a call (800-782-7077).

Notes from National . . . Gayle Denny, ELEA Executive Director



✝ Spring has sprung! By the time you receive this issue, many of you will be ready for end-of-the-year celebrations, packing up the classrooms and making summer plans.

ELEA formed a policy a while back which allows for the Director (me) to take up to a three-month sabbatical for each seven years of service. I am in my 11th year as Director and have yet to take any time, other than my usual short vacations where I can fit them in here and there. So . . . three months is really not feasible for me at this point in my personal life, with a husband who has health concerns and in the work of ELEA with such limited staff to handle things, but I am taking an extra three weeks this summer as a “mini-sabbatical” at a Benedictine monastery in New Mexico. It will be a wonderful time of renewal and retreat and I am very much looking forward to it.

Here’s where you, as members, come into the story. I will be out of the office from June 14 through July 2, returning on July 5. Candy Rickard, ELEA’s Membership Coordinator, will be in the office on a part-time basis (she normally works 20 hours per week), and will be posting messages to the ELEAMembers@yahoo.com address. Remember - those messages do not post automatically - they come to ELEA to moderate and post. So, if you send a message and don’t see it right away, you do not need to send it again. Please be patient! Hugh Kress, ELEA’s Accreditation Coordinator, will be available to answer questions and assist with issues specifically related to accreditation. You may reach Hugh directly at 920-636-6112. Anything you need me to discuss with you or issues I need to be involved in should be addressed prior to June 10 or will need to wait for my return.

May all of you have a wonderful summer, whether your program is year-round or on a school-year calendar.

✝ We once again wish to thank those who have contributed to our Annual Fund and/or the School Extension Fund of ELEA. Donations to our Annual Fund go to ELEA’s operating budget, and donations to the School Extension Fund go to provide up to three grants per year to schools and centers who are expanding their programs. Thank you to those who have contributed in the last fiscal quarter:

- ★ Bethlehem Lutheran Church, Marysville, WA
- ★ JoAnne Gustafson, Edina, MN
- ★ Immanuel Lutheran School, Philadelphia, PA
- ★ Marlene Lund, New York, NY
- ★ Prince of Peace Lutheran Church, Everett, WA

Your gifts are SO important for ELEA to maintain its current level of programming and not have to increase dues. Thank you!!! Remember, ELEA anticipates and receives donation to the Annual Fund and the School Extension Fund year round. You may give by check or now on our website at www.eleanational.org by clicking on “Giving Opportunities”.

✝ Upcoming Events:

- ★ July 31 - Region 4’s “Follow Jesus in the World” Teacher and Administrator Conference at Texas Lutheran University, Seguin, Texas.
- ★ September 25 - Region 4 Teacher and Administrator Conference at Faith Lutheran Church in Flower Mound, Texas.
- ★ ECLEC - East Coast Lutheran Educator’s Conference at Hershey Lodge in Hershey, Pennsylvania October 27 - 29, 2010. This is a great teacher and administrator conference and the whole country is invited, not just the East Coasters!

Registration materials for all events coming soon, and will also be available on our website at www.eleanational.org with a link from our home page. Hope to see you there!

✝ ELEA membership may now be renewed and/or new memberships may be processed electronically and paid by credit card or a PayPal account. Go to www.eleanational.org and click on “Membership”. You will find the options at the bottom of the page. We hope this gives you some flexibility in keeping your membership dues current.

✝ Donations to ELEA’s Annual Fund and School Extension Fund can now be made by credit card or PayPal account online as well. Click on “Giving Opportunities” from our website’s home page - www.eleanational.org. Don’t forget that the way we can keep dues at an affordable level is because of gifts from those who can give more. Membership dues cover about 75% of our expenses, but we rely on gifts and donations to cover much of the balance. Just like your school budgets where tuition doesn’t cover it all!

✝ Much of the information conveyed and resources shared which makes ELEA such an important connection for you as administrators takes place by email, directing you to our website and others, and disseminating information in a timely manner. You are “out of the loop” if you do not provide us with a current working email address. I know that some of you do not have school addresses, but consider sharing your personal address if you’d like to receive the bulk of the correspondence from ELEA. In this fast-paced world where the cost of postage continues to rise, we rely on electronic communication for much of our work, and we don’t want you to miss out! Just email eleanational@cs.com and notify us of your email address - initially and also whenever you make a change. We want to stay in touch! Watch soon for ELEA on social networking sites as well.

Wasting Time Well!

Dr. Rich Bimler, Past President & Senior Staff Associate
Wheat Ridge Ministries



My mom was a great educator. Her classroom was our home. She gave tough homework, like make your bed, clean your room, and don't fight with your brother. She was also a strict grader, never giving any grades better than saying, "Well, you could have done better!" She was full-time, year 'round, with no teaching assistants either.

I also remember some of her favorite quotes she would throw out to my brother and me ... "You boys are going to keep fighting until one of you gets hurt" and "Don't come running to me if you break your leg" and the ever-popular, "If you can't say something nice about someone, don't say anything at all." That is obviously why my brother and I hardly ever talked to each other, by the way!

But one of my mom's favorite sayings was, "If something is worth doing, it's worth doing well," and that is why this article is dedicated to my favorite teacher, Mildred Bimler. In her honor, and memory, I'd like to suggest that we practice hard each day to "waste time well!"

I believe it was the philosopher, Cicero, (a classmate of my Mom's perhaps!) who said, "He does not seem to be a free man who does not sometimes do nothing." In spite of this quote being politically incorrect and structured a little weird, it does make sense to me. In a world where we are most often graded and evaluated on what we do and how busy we are, it really does make sense that we settle down and learn how to waste time well!

This is a theological statement also. The Lord has already done everything that needs to be done for our Salvation! He was born, lived, suffered, died and rose for us ... and "It is finished!" That's it. End of story. Relax! Rejoice! Do nothing! Our culture has convinced us into believing that we still need to "do something" to make God love us and forgive us. We still need to prove to God, and to all the little gods around us, that we are "worth" something, that we count, that we are numero 1 ... or that we at least try harder to be #1! A recent poster I saw says it well ...

JUST DO NOTHING!

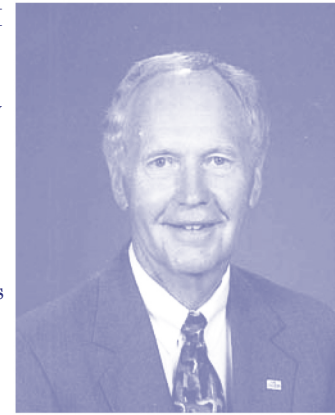
1. God is in charge.
2. You are NOT in charge.
3. Just sit there ... and DO NOTHING.
4. Life goes on just fine.
5. Enjoy!

For many of us, wasting time well does not feel very good, at least at the beginning. After all, I am God's special person. I am called to minister to the needs of others; I have lots of gifts and talents I need to use in God's Kingdom; People are counting on me; I have a lot of responsibilities at home, at church, in school, in the

community. No thank you ... I do not want to be caught "wasting time." However, as I struggle through the use of my time, I am (slowly) learning that by "wasting time well" I am actually allowing myself to be better prepared to be in ministry to myself and to others. And who shows us this ministry style the best? Jesus Himself, as we watch Him through the Scriptures as He listens and walks and rests and heals and eats and visits with a few people as well as with lots of people, as well as getting away by Himself, just to "do nothing."

Of course, there are good ways and there are bad ways of wasting time. Sitting by the TV hours on end watching athletic events is, I hate to say, not a good way to waste time well. Worrying about events and issues you and I have no control over also is not encouraged either. Here are three suggested ways to working at wasting time well:

1. Musing. Do a lot of listening, first to the Lord, and then to others, and also to yourself. This "musing" can take the form of a prayer or a discussion with yourself, or with a close friend. Sit and talk with someone, just to talk and share, not to solve the world's problems. For me, it is good to muse and "just think" when I am shaving, or caught in traffic (ugh!), or reading the Scriptures.
2. Spend time alone. Tough to do, you say? Probably, but get up 30 minutes earlier, or find a place of solace at noon, or a hide out at night.
3. Chew on the grass and stare into space! Someone once remarked that a great example of "wasting time well" is to watch a cow! Now I generally do not watch cows all that much, but I would agree that a cow does look unproductive, just standing there in the field chewing and chewing and chewing again. But when you are creating milk, you need some time to chew the grass and stare into space.



Story Continued on Page 8

Evangelical Lutheran Education Association

500 North Estrella Parkway
Suite B2, Box 601
Goodyear, AZ 85338

Phone: 800-500-7644
Fax: 623-882-8770
Email: eleanational@cs.com
Web Site: www.eleanational.org

Please read, check, and pass on:

- Pastor
- Superintendent or Exec. Dir.
- Principal
- ECE Director
- School Board Chair
- Teachers

NON-PROFIT ORG.
U.S. POSTAGE
PAID
OWATONNA, MN
PERMIT NO 41

Views & Vision

Editor: Gayle Denny

Views & Vision is published four times per year, Fall, Winter, Spring, and Summer by the Evangelical Lutheran Education Association.

500 North Estrella Parkway
Suite B2, Box 601
Goodyear, AZ 85338
Phone: 800-500-7644
E-mail: ELEANational@cs.com

Views and Vision is also available electronically and can be accessed through www.eleanational.org

Permission is granted to reproduce articles for use with the notice: "Reprinted from Views & Vision."

“Wasting Time Well”, *Continued from Page 7*

The more creative we want to be, the more space-staring we need to do. Perhaps part of our problem is that we waste time by doing “the same old same old” because we have always done it that way before! I am reminded of an educator who used to say that when he was teaching in a classroom, if he wasn’t sure what he should be doing, he would always “count the lunch money” again and again and again. Sure, he was busy, and he was not wasting time well!

So here’s to wasting time well. Thanks, Mom, for teaching me the importance of this gift. And Lord, help me now to continue to waste time well by taking the time to see You connected to me daily, through my Baptism. Help us to keep creative in our use of the time You give to us.

Enjoy the day. Time to go back and “do nothing” as we celebrate the Presence of the Lord!

ELEA’s Purpose Statement

The Evangelical Lutheran Education Association promotes and supports quality, Christ-centered schools and early childhood programs of the ELCA and its full communion partners.